

**200-014**  
**2 NAUTICAL MILES**  
**360° RED LIGHT**  
**SINGLE, HORIZONTALLY MOUNTED**

The LED light consists of a single array of LEDs that produces light in the specified angle.

The precision machined 6082 aluminium housing with an anodized surface makes the light a rugged and durable housing for the LEDs and electronics contained within.

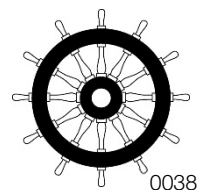
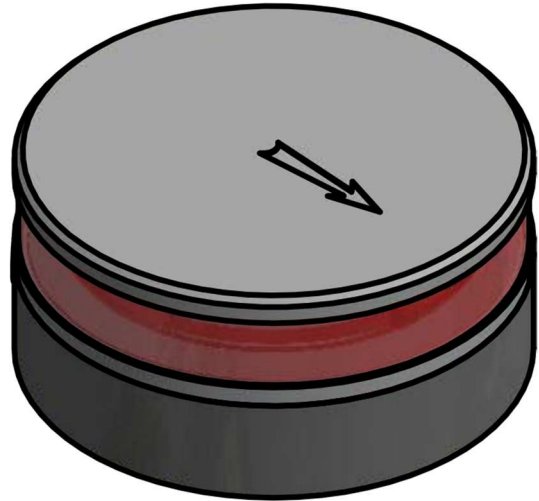
The interior is completely filled with a special potting resin making it water- and vibration proof.

Produced in our in-house manufacturing facility to meet and exceed exacting standards such as EN14744 and UL1104, under a quality management system continuously surveyed by Lloyds Register Quality Assurance.

Each light is subjected to final testing for a minimum of 16 hours of continuous operation bringing the total test time beyond 24 hours.

This navigation light is in compliance with the following standards:

- COLREG72
- EN14744
- IEC 60945
- USCG (UL1104)



Together with an appropriate Control & Monitoring System, such as Lopolight's own NLC\* this navigation light can form part of an IMO MSC 253(83), LY3 and LY4 compliant system.

\*) information found here: [www.lopolight.com/NlcPanel](http://www.lopolight.com/NlcPanel)

Technical specifications

Vessel size: Up to 50m (Up to 164')

Visibility: >2 nautical miles

Intensity: >5,4 cd

Power consumption; 3,2 Watt; Current @ 12 VDC: 0,27A - Current @ 24 VDC: 0,13A

Operating voltage: 10 - 32 V DC

Number of LEDs: 28

Light colour: Red

Operating temperature: -25°C to +55°C

IP Rating: IP68

Mounting: Horizontal, see K-Lock sheet for options.

Connection: 1 cable consisting of 2 x 0,5 mm<sup>2</sup> leads, a screen and insulation.

- Red lead = Power
- Black lead = GND

Certification: The product is certified by Lloyds (LR) and certificates can be found on [www.lopolight.com](http://www.lopolight.com) under certificates.

The product is in compliance with the following standards:  
COLREG72/ EN14744 / IEC 60945 / USCG (UL1104)

Dimensions: See drawing

Weight: 0,47kg

Warranty:

Lopolight products are covered by a 5-year limited warranty.

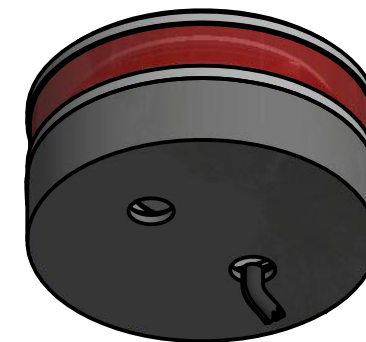
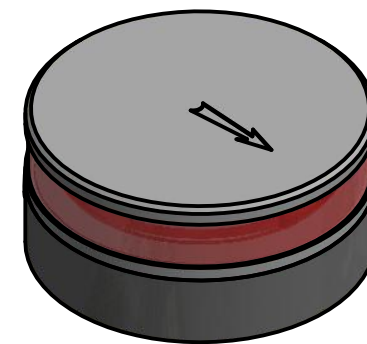
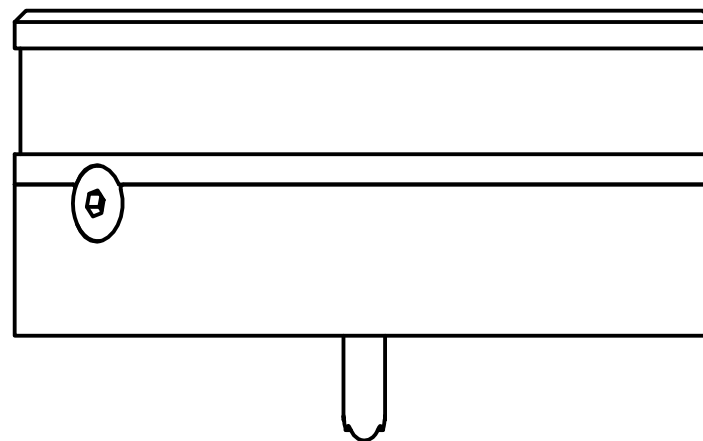
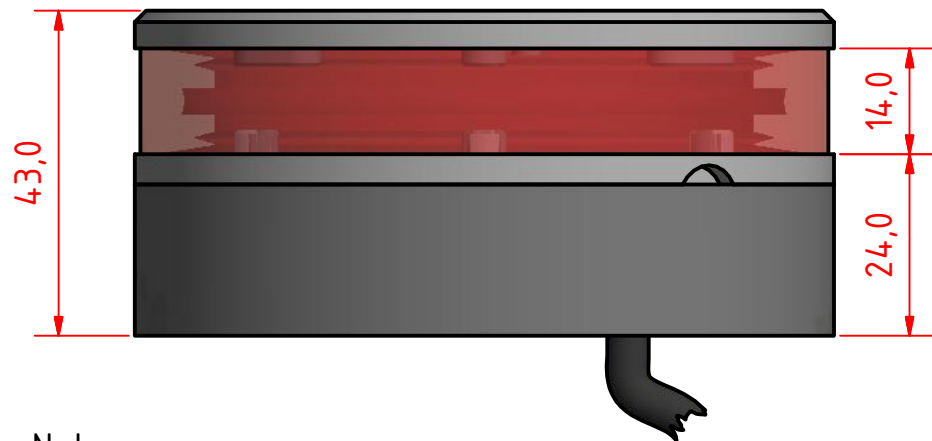
Warranty conditions can be found on [www.lopolight.com/Service](http://www.lopolight.com/Service)

Included in the standard package:

- 1 pc. Navigation light, pre-cabled with 2,5m marine grade cable on HDPE base
- Installation instructions

## Ordering information

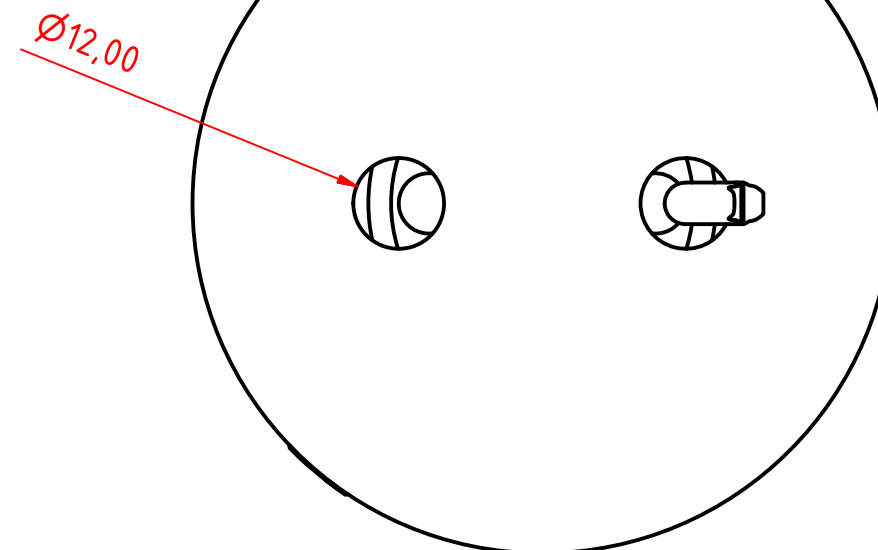
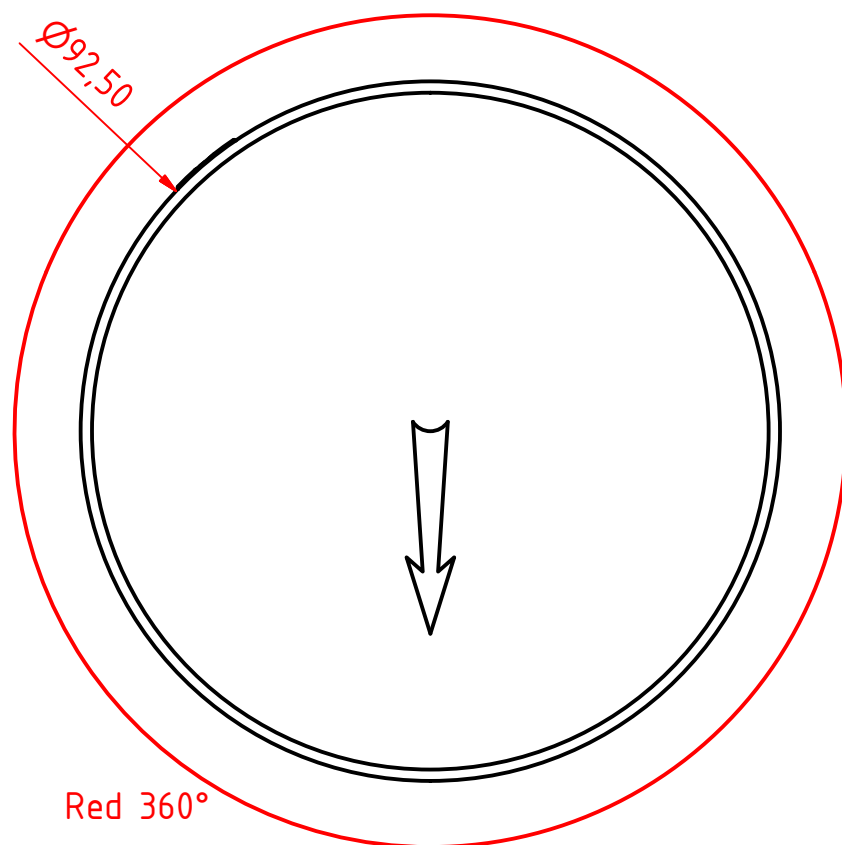
BASE OPTION	CABLE LENGTH	PART NUMBER SILVER FINISH	PART NUMBER BLACK FINISH
400-038 (drawing A) HDPE base (standard)	0,75m / 2.5' (standard)	200-014	200-014-B
	6m / 19.7'	200-014 6M	200-014-B 6M
	15m / 49.2'	200-014 15M	200-0124B 15M
400-034 (drawing B - E) CSCD base	0,75m / 2.5'	200-014-CSCD	200-014-B-CSCD
	6m / 19.7'	200-014-CSCD 6M	200-014-B-CSCD 6M
	15m / 49.2'	200-014-CSCD 15M	200-014-B-CSCD 15M
400-035 (drawing F - G) CD base	0,75m / 2.5'	200-014-CD	200-014-B-CD
	6m / 19.7'	200-014-CD 6M	200-014-B-CD 6M
	15m / 49.2'	200-014-CD 15M	200-014-B-CD 15M
400-036 (drawing H) Ultra low base	0,75m / 2.5'	200-014-UL	200-014-UL-B
	6m / 19.7'	200-014-UL 6M	200-014-B-UL 6M
	15m / 49.2'	200-014-UL 15M	200-014-B-UL 15M



( 1 : 1 )

**Note:**

The PE Plastic base is intended for fitting on site and can be either drilled for mounting screws from above or drilled and tapped from below. 6mm machine screws with nuts and washers are recommended for secure mounting.



200-014 - 360° Red, PE Base.

DRAWING NO.: 200-014AB	REV. NO.: 0	SIZE: A3	DRAWN BY: Sergio
SCALE: 1:1	TOLERANCES: DS/ISO 2768-f	REVIEWED BY:	CREATION DATE: 07-09-2017
MATERIAL DESCRIPTION: Alu EN 6082, Acrylic, PE (20µ) Silver anodized according to EN ISO 7599 (450µ) Black anodized according to MIL-A 8625F			

This Drawing, and the information within, is the property of Lopolight ApS and may not be used in any form without express permission there from. Lopolight reserves the right to change this drawing and assumes no liability for the information communicated herein. Use of dimensions and other information in this drawing is at the users own risk.

**LOPOLIGHT**

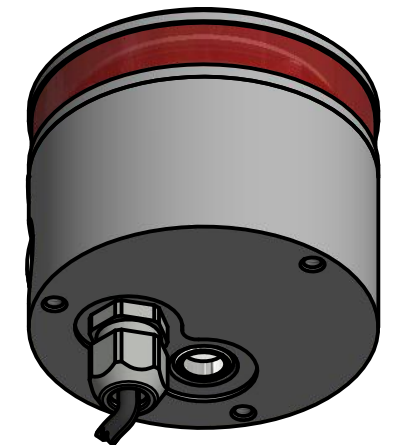
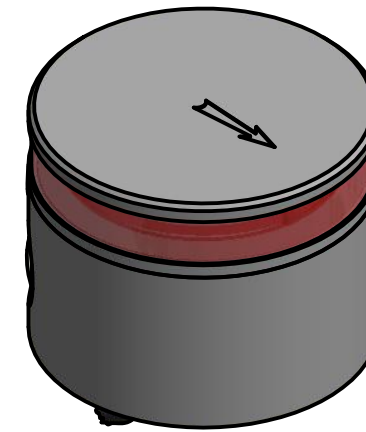
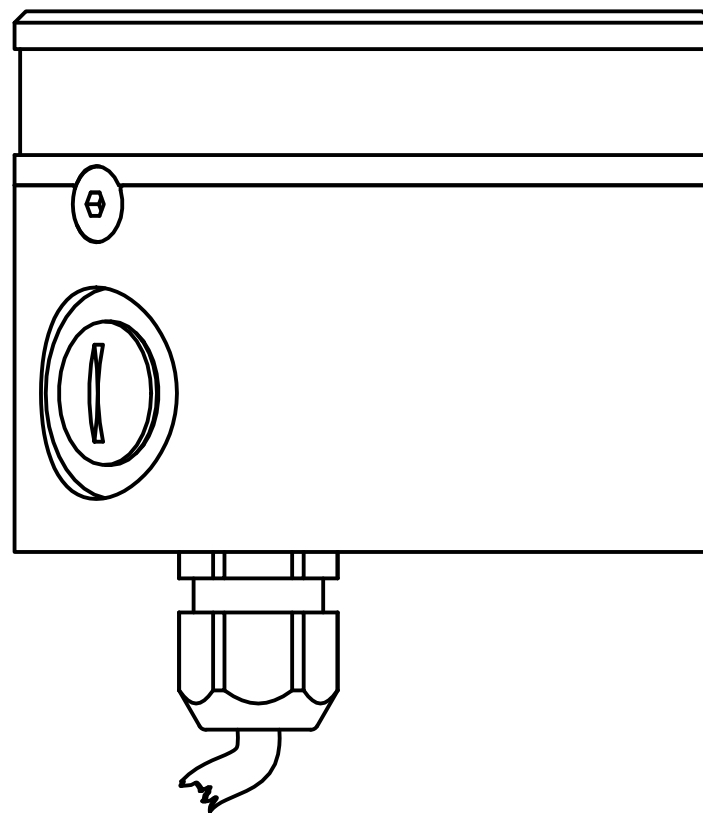
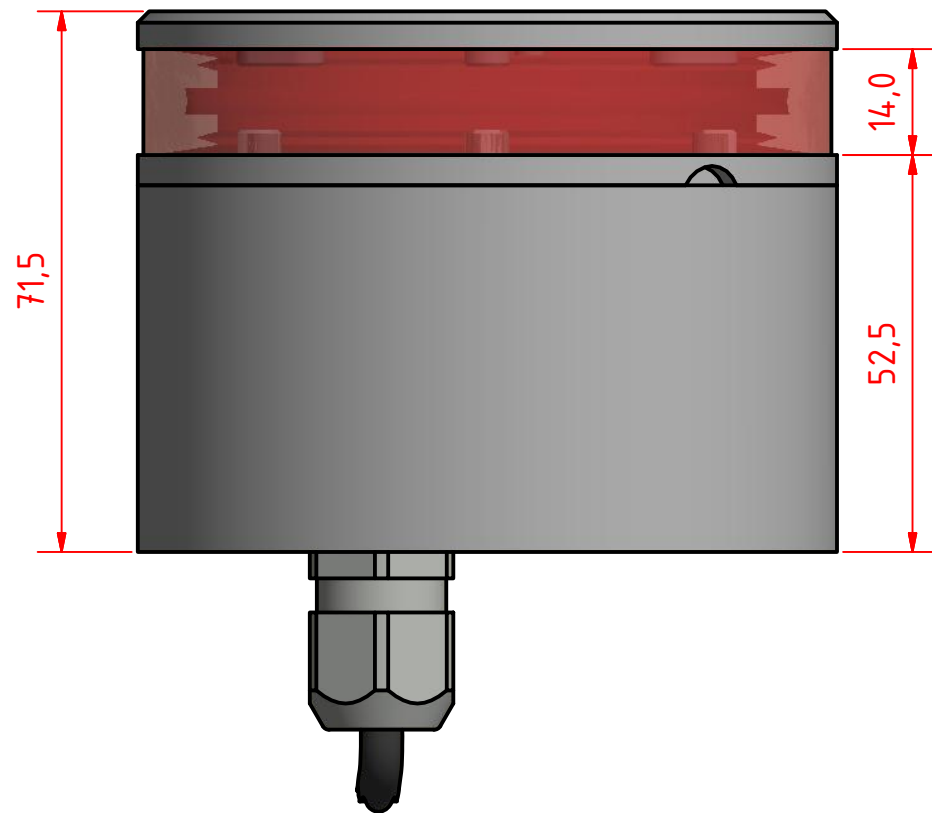
Lopolight ApS  
Ved Klaedebo 12  
DK-2970, Hoersholm  
Denmark

Tel: (+45) 32 48 50 30 Fax: (+45) 32 48 50 32  
info@lopolight.com

50MM AT A3

A B C D E F G H I J

1



1

2

2

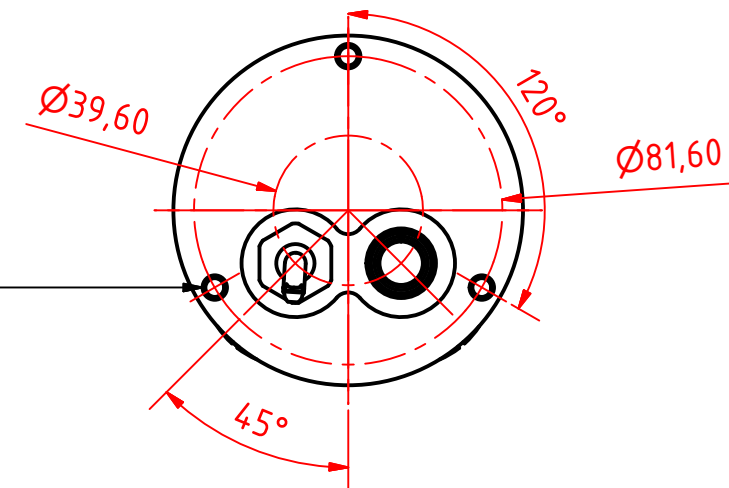
3

3

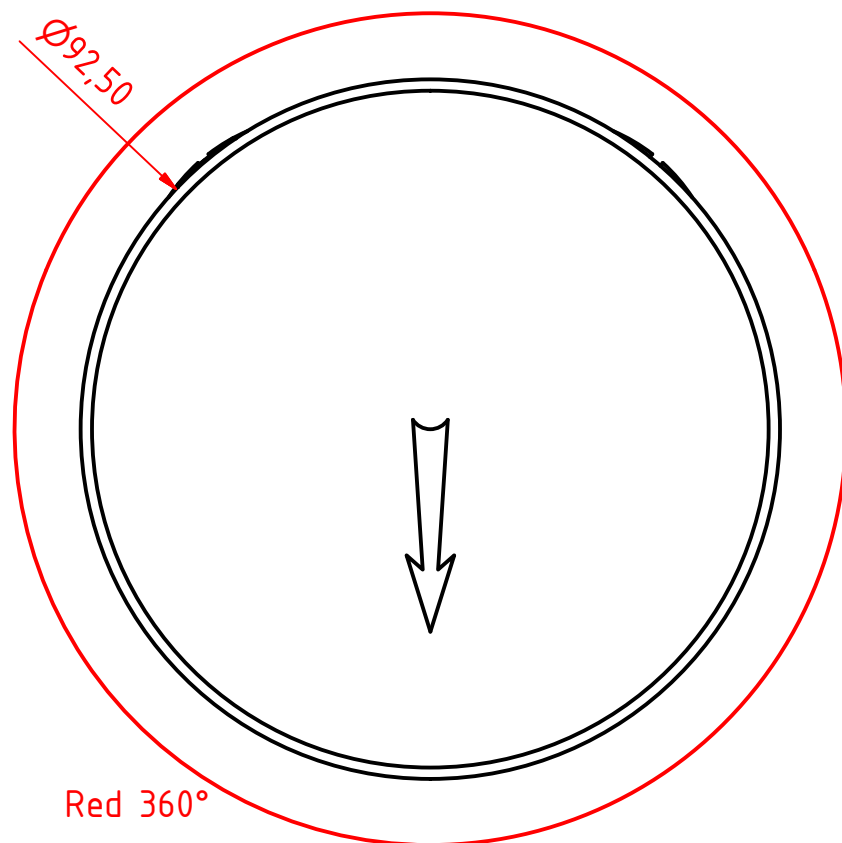
4

4

( 1 : 2 )



Mounting Hole  
M6x1 - 10,0mm DEEP



5

5

6

6

7

7

8

8

200-014 - 360° Red, 400-034 Promount,  
Cable Down.

DRAWING NO.:	REV. NO.:	SIZE:	DRAWN BY:
200-014BB	0	A3	Sergio
SCALE:	TOLERANCES:	REVIEWED BY:	CREATION DATE:
1:1	DS/ISO 2768-f		07-09-2017
MATERIAL DESCRIPTION:			
EN 6082 Alu, Acrylic.			
(20µ) Silver anodized according to EN ISO 7599			
(50µ) Black anodized according to MIL-A 8625F			

This Drawing, and the information within, is the property of Lopolight ApS and may not be used in any form without express permission there from. Lopolight reserves the right to change this drawing and assumes no liability for the information communicated herein. Use of dimensions and other information in this drawing is at the users own risk.

**LOPOLIGHT**

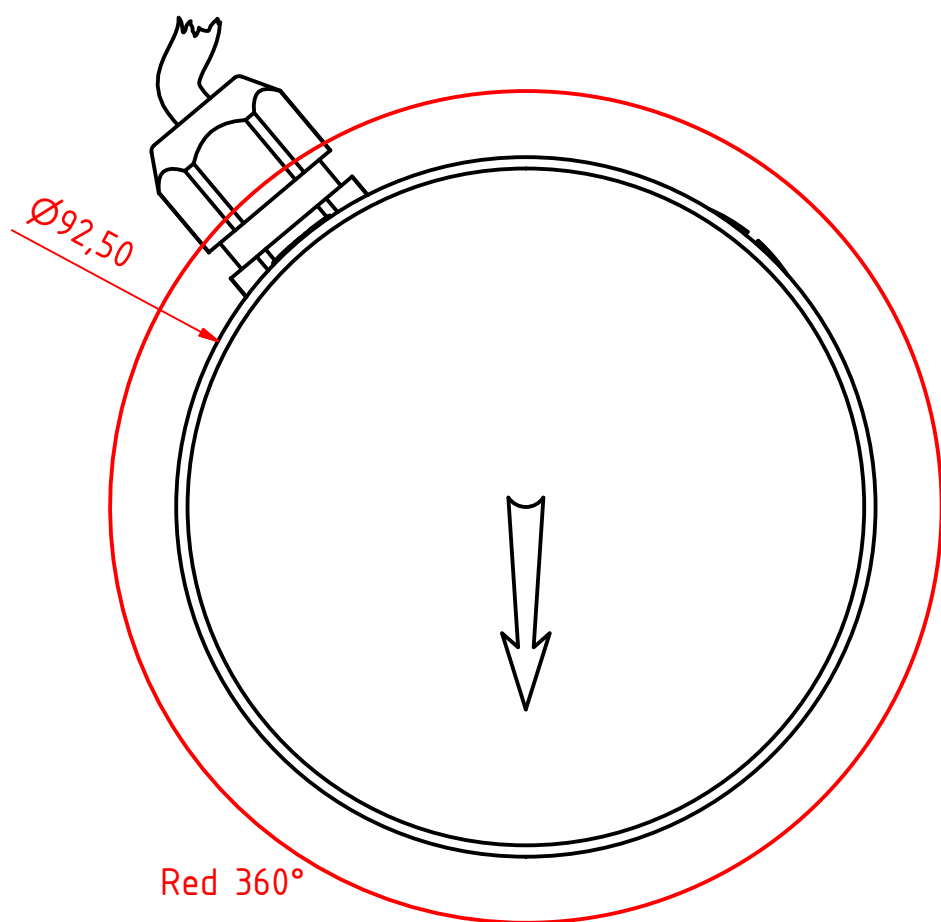
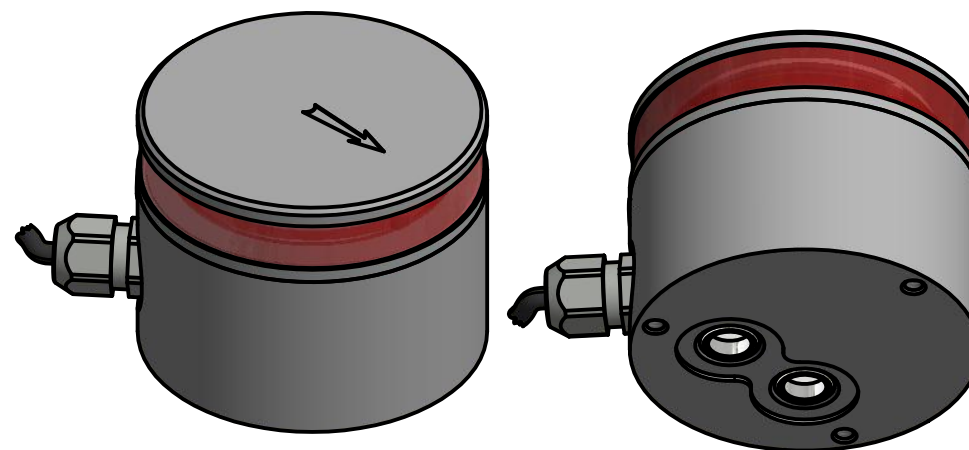
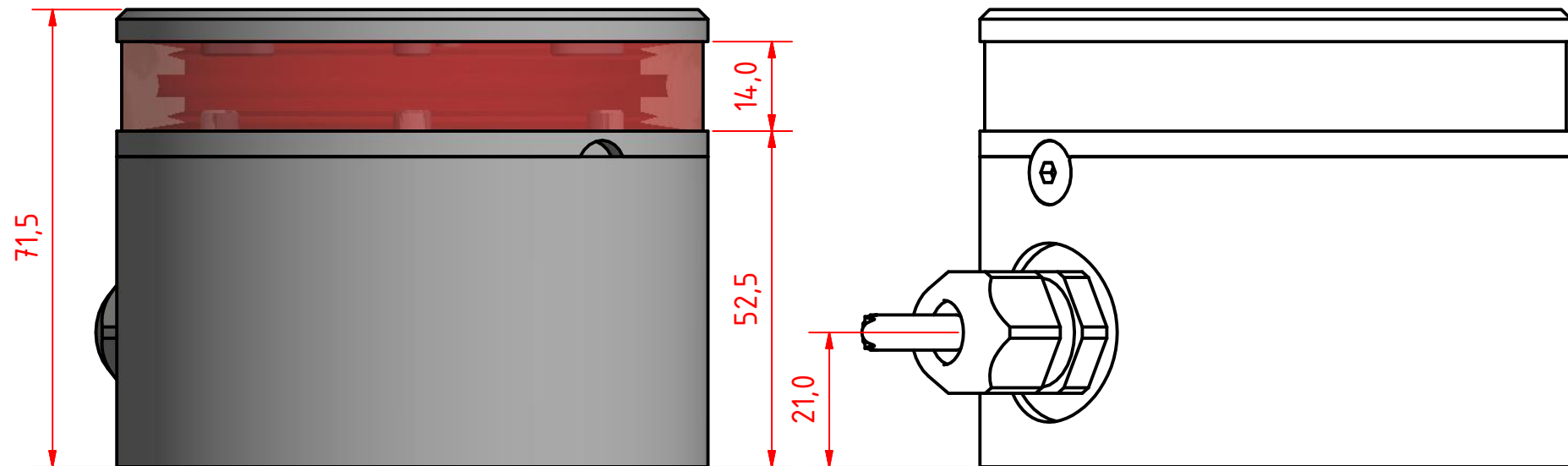
Lopolight ApS  
Ved Klaedebo 12  
DK-2970, Hoersholm  
Denmark

[www.lopolight.com](http://www.lopolight.com)

Tel: (+45) 32 48 50 30 Fax: (+45) 32 48 50 32  
[info@lopolight.com](mailto:info@lopolight.com)

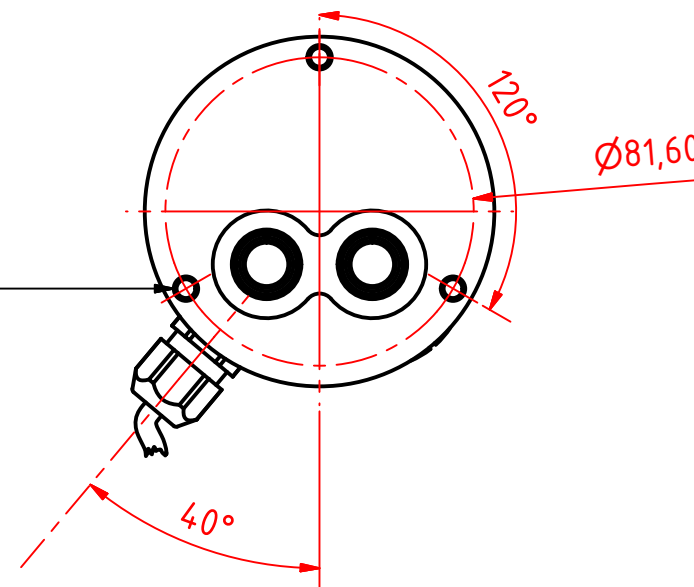
50MM AT A3

A B C D E F G H I J



Mounting Hole  
M6x1 - 10,0mm DEEP

( 1 : 2 )



200-014 - 360° Red, 400-034 Promount,  
Cable Side

DRAWING NO.: 200-014CB	REV. NO.: 0	SIZE: A3	DRAWN BY: Sergio
SCALE: 1:1	TOLERANCES: DS/ISO 2768-f	REVIEWED BY:	CREATION DATE: 07-09-2017
MATERIAL DESCRIPTION: EN 6082 Alu, Acrylic.			

(20µ) Silver anodized according to EN ISO 7599  
(50µ) Black anodized according to MIL-A 8625F

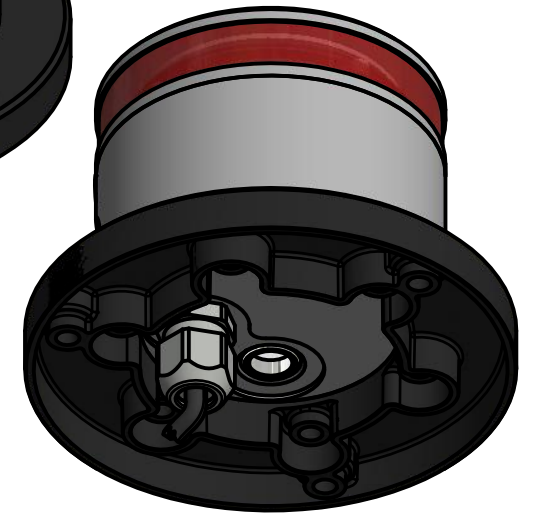
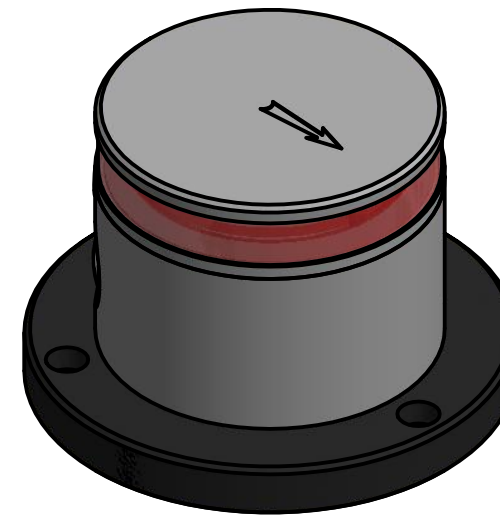
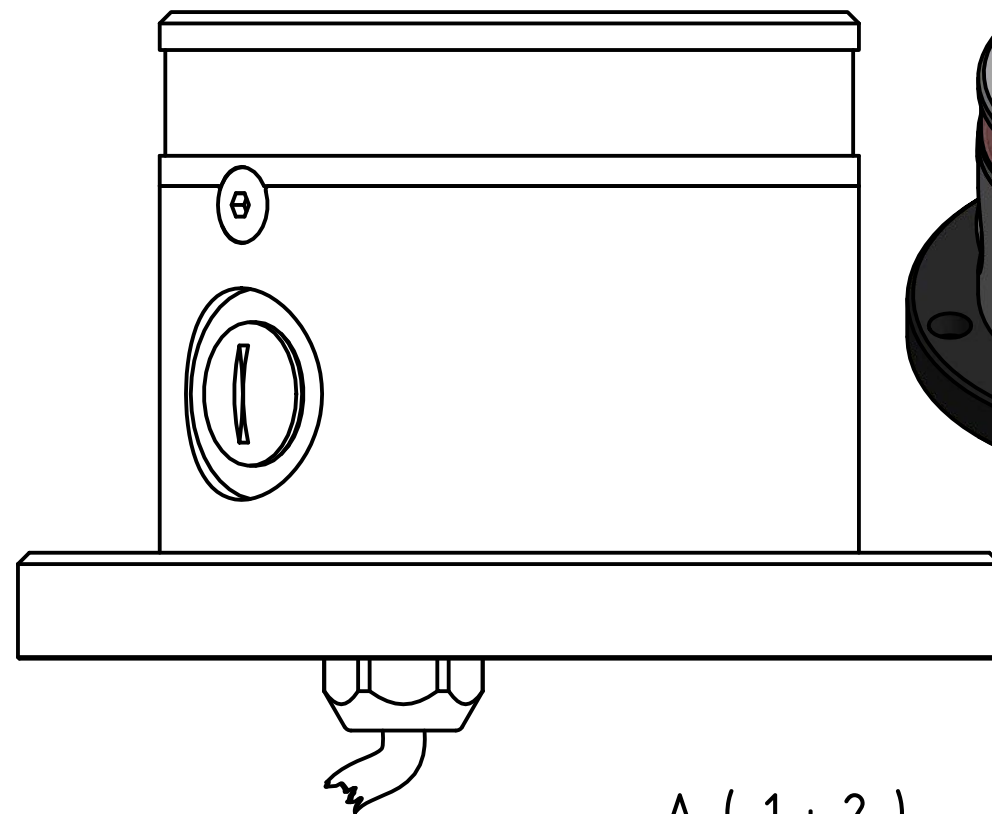
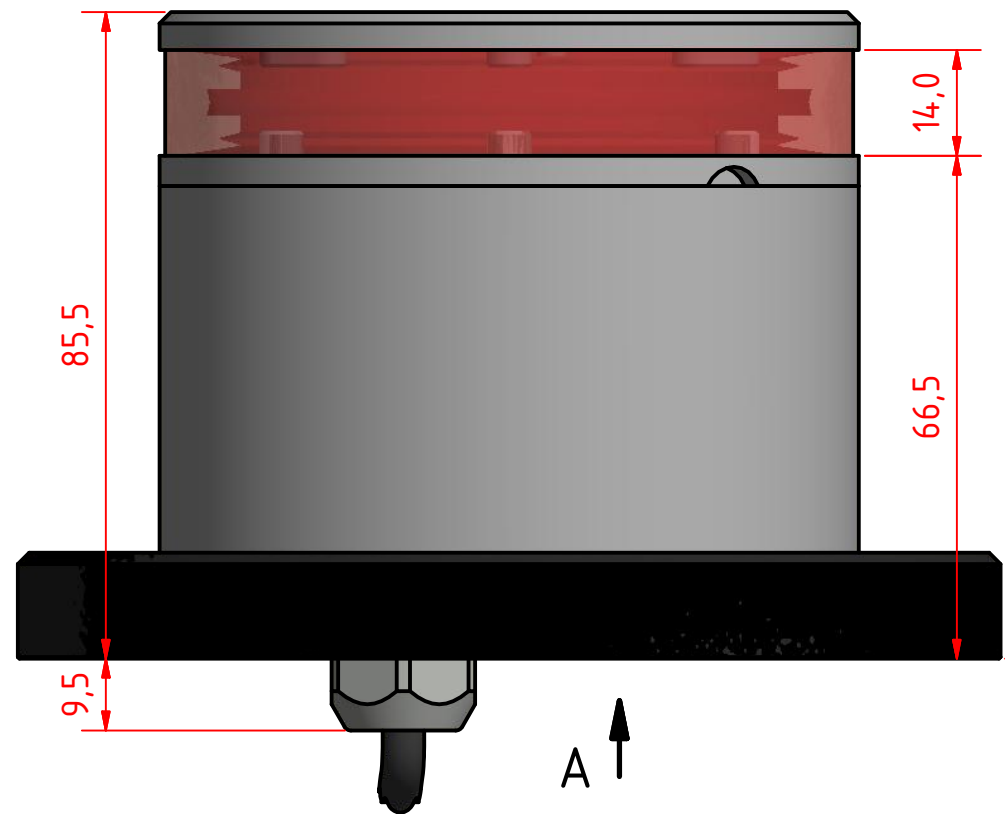
This Drawing, and the information within, is the property of Lopolight ApS and may not be used in any form without express permission there from. Lopolight reserves the right to change this drawing and assumes no liability for the information communicated herein. Use of dimensions and other information in this drawing is at the users own risk.

**LOPOLIGHT**

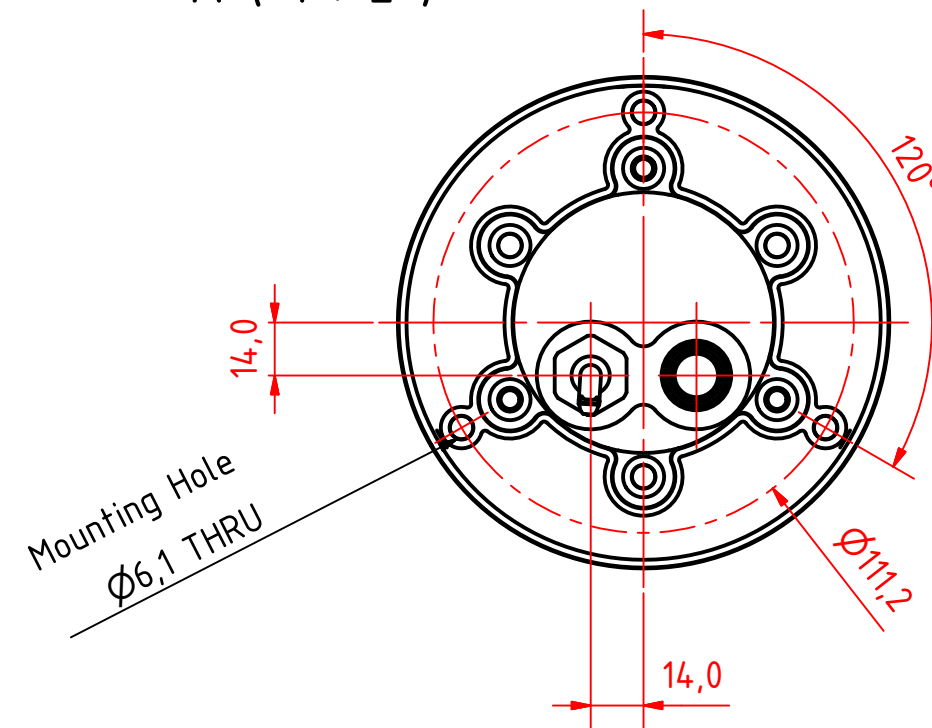
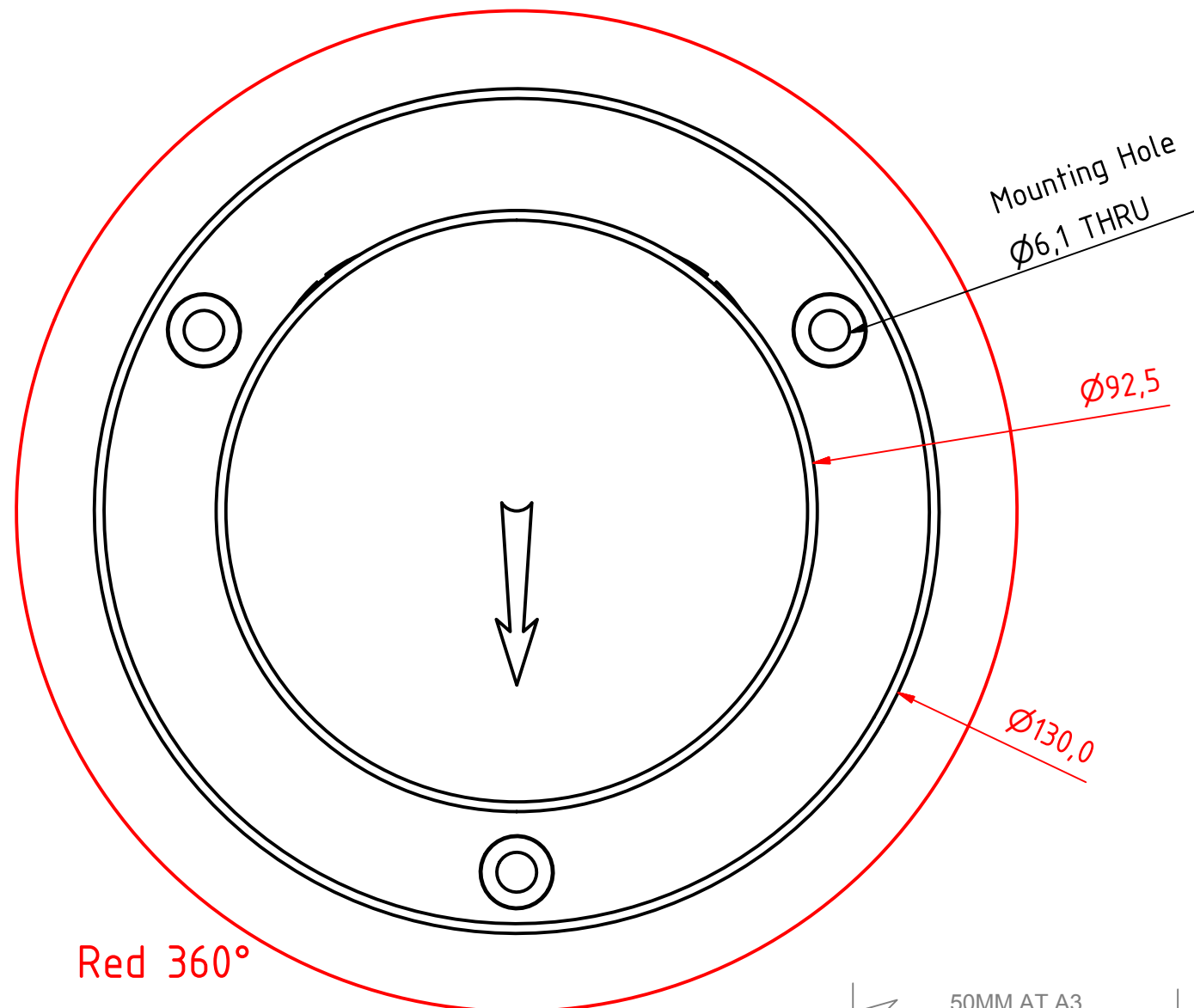
Lopolight ApS  
Ved Klaedebo 12  
DK-2970, Hoersholm  
Denmark

Tel: (+45) 32 48 50 30 Fax: (+45) 32 48 50 32  
info@lopolight.com

50MM AT A3



A ( 1 : 2 )



200-014 - 360° Red, 400-034 Promount,  
400-404 PE Base Plate, Cable Down

DRAWING NO.:	REV. NO.:	SIZE:	DRAWN BY:
200-014DB	0	A3	Sergio
SCALE:	TOLERANCES:	REVIEWED BY:	CREATION DATE:
1:1	DS/ISO 2768-f		07-09-2017
MATERIAL DESCRIPTION:			
EN 6082 Alu, Acrylic.			
(20µ) Silver anodized according to EN ISO 7599			
(50µ) Black anodized according to MIL-A 8625F			

This Drawing, and the information within, is the property of Lopolight ApS and may not be used in any form without express permission there from. Lopolight reserves the right to change this drawing and assumes no liability for the information communicated herein. Use of dimensions and other information in this drawing is at the users own risk.

**LOPOLIGHT**

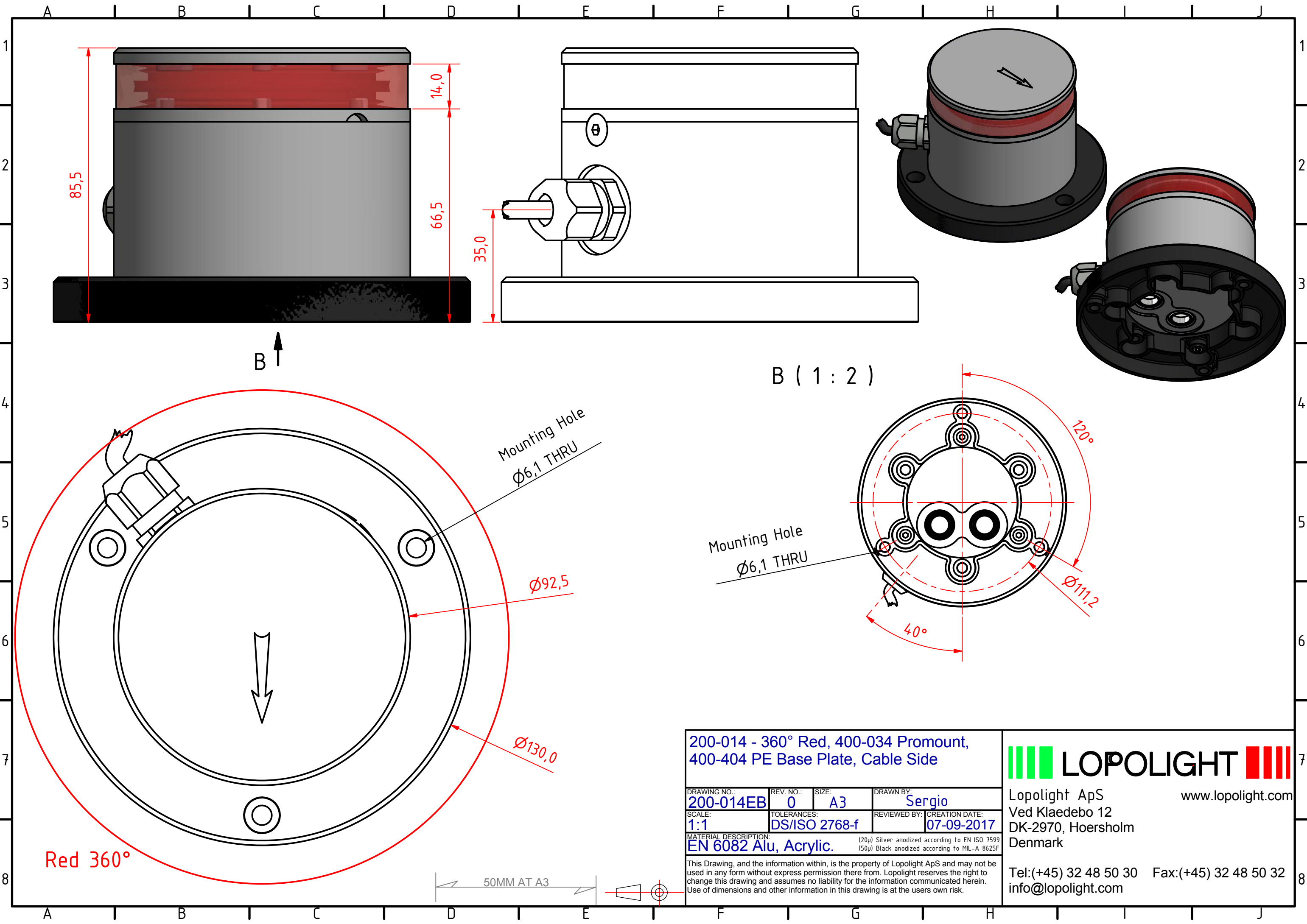
Lopolight ApS  
Ved Klaedebo 12  
DK-2970, Hoersholm  
Denmark

[www.lopolight.com](http://www.lopolight.com)

Tel: (+45) 32 48 50 30 Fax: (+45) 32 48 50 32  
[info@lopolight.com](mailto:info@lopolight.com)

50MM AT A3





200-014 - 360° Red, 400-034 Promount,  
400-404 PE Base Plate, Cable Side

DRAWING NO.:	REV. NO.:	SIZE:	DRAWN BY:
200-014EB	0	A3	Sergio
SCALE:	TOLERANCES:	REVIEWED BY:	CREATION DATE:
1:1	DS/ISO 2768-f		07-09-2017
MATERIAL DESCRIPTION:			
EN 6082 Alu, Acrylic.			
(20µ) Silver anodized according to EN ISO 7599 (50µ) Black anodized according to MIL-A 8625F			

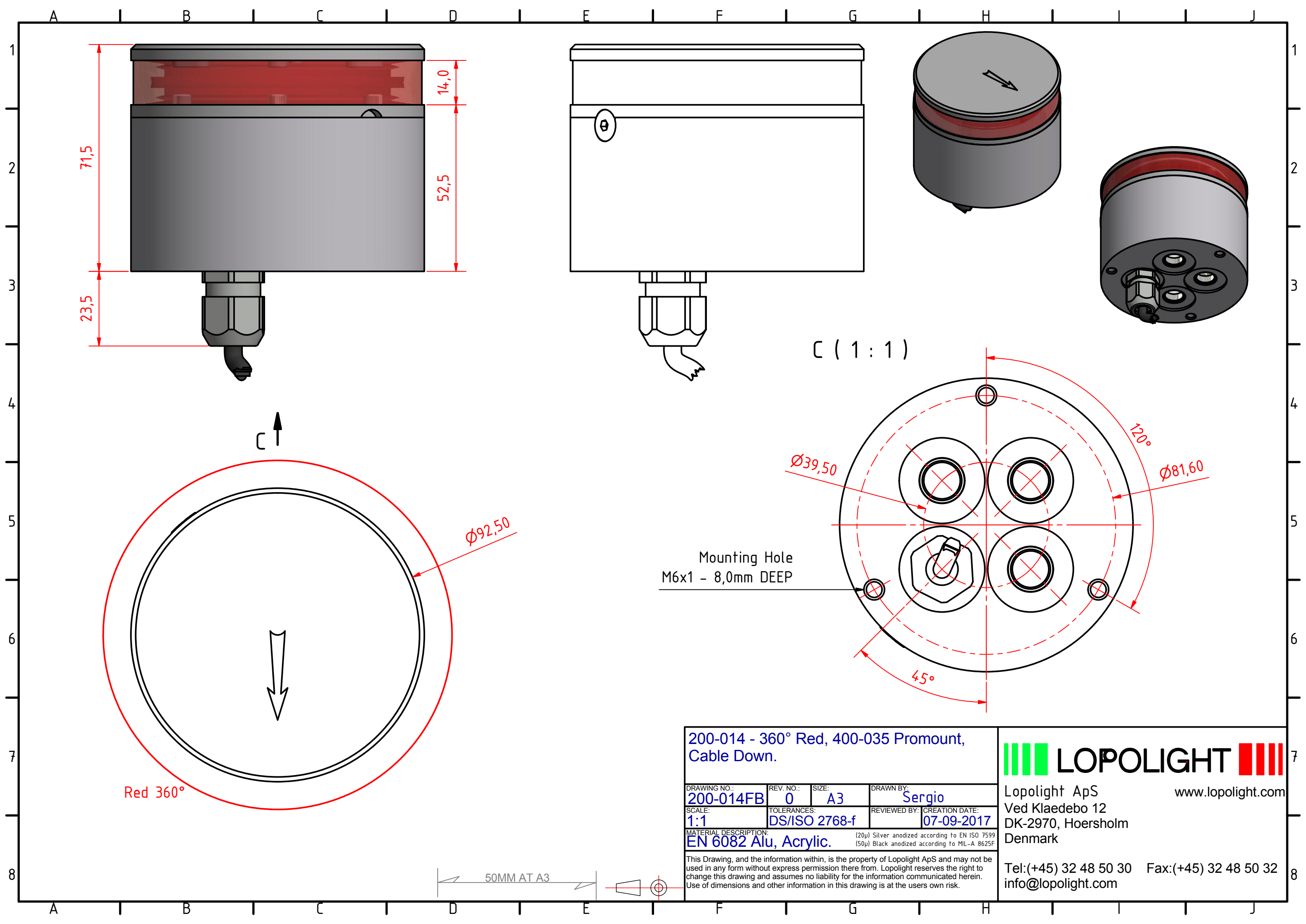
This Drawing, and the information within, is the property of Lopolight ApS and may not be used in any form without express permission there from. Lopolight reserves the right to change this drawing and assumes no liability for the information communicated herein. Use of dimensions and other information in this drawing is at the users own risk.

**LOPOLIGHT**

Lopolight ApS  
Ved Klaedebo 12  
DK-2970, Hoersholm  
Denmark

Tel: (+45) 32 48 50 30 Fax: (+45) 32 48 50 32  
info@lopolight.com





200-014 - 360° Red, 400-035 Promount, Cable Down.

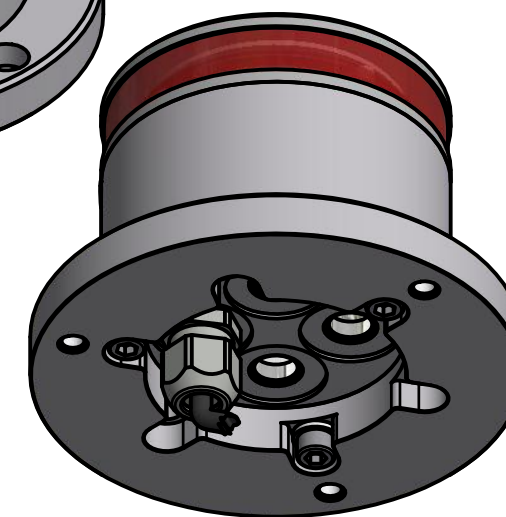
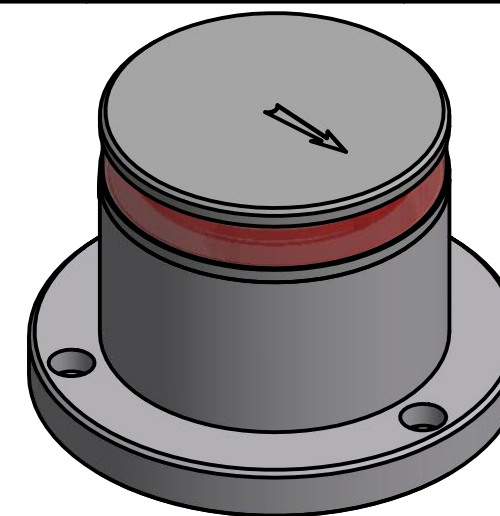
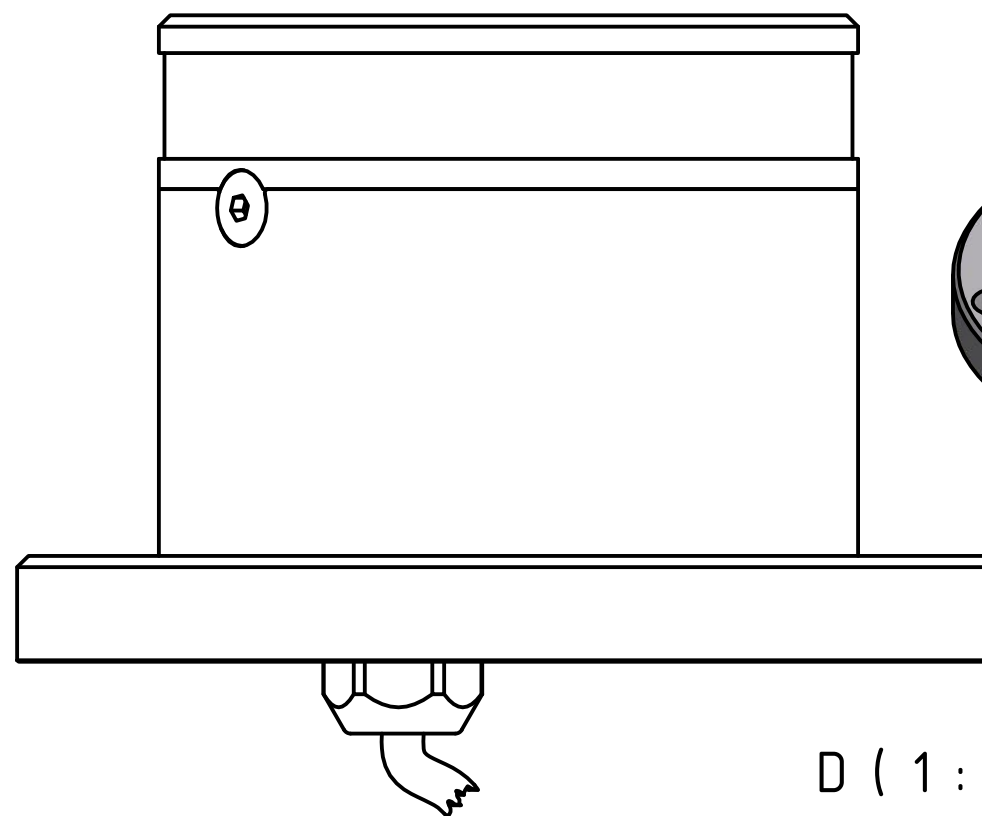
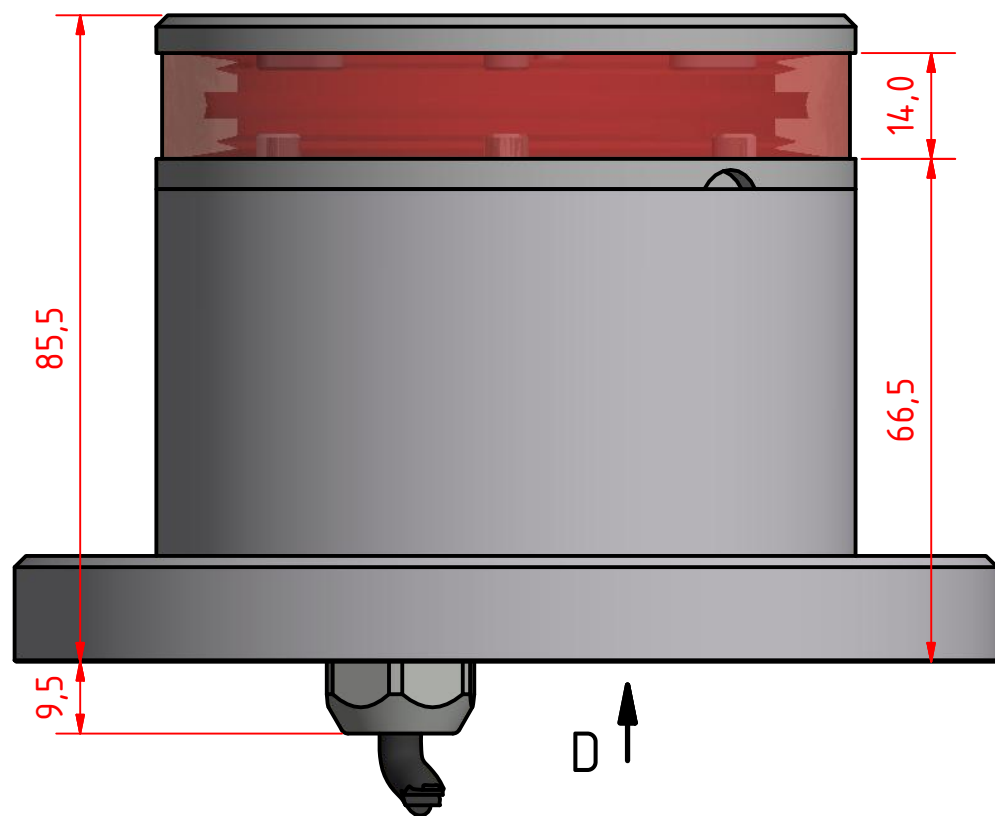
DRAWING NO.: 200-014FB	REV. NO.: 0	SIZE: A3	DRAWN BY: Sergio
SCALE: 1:1	TOLERANCES: DS/ISO 2768-f	REVIEWED BY:	CREATION DATE: 07-09-2017
MATERIAL DESCRIPTION: EN 6082 Alu, Acrylic. (20µ) Silver anodized according to EN ISO 7599 (50µ) Black anodized according to MIL-A 8625F			
This Drawing, and the information within, is the property of Lopolight ApS and may not be used in any form without express permission there from. Lopolight reserves the right to change this drawing and assumes no liability for the information communicated herein. Use of dimensions and other information in this drawing is at the users own risk.			

**LOPOLIGHT**

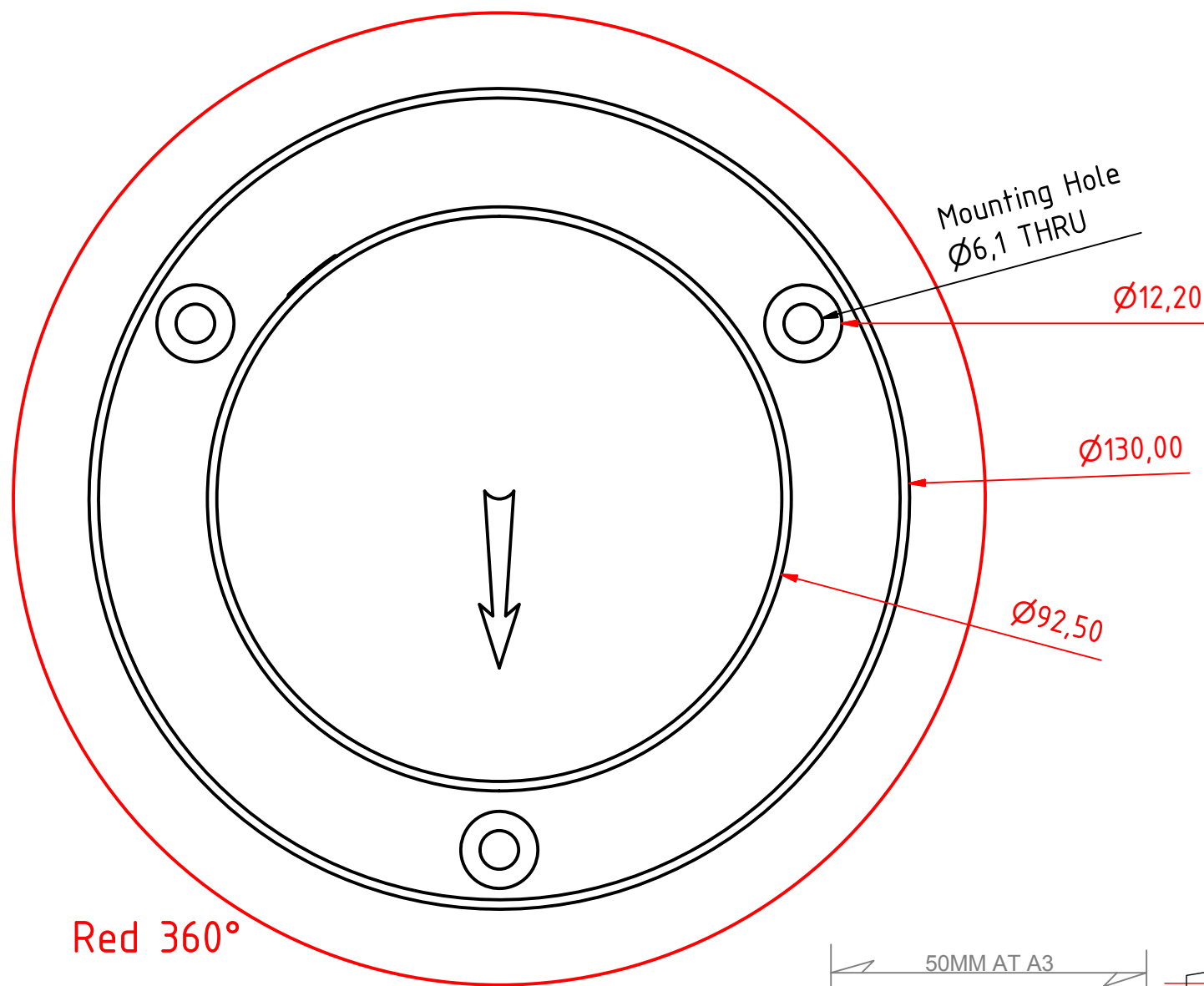
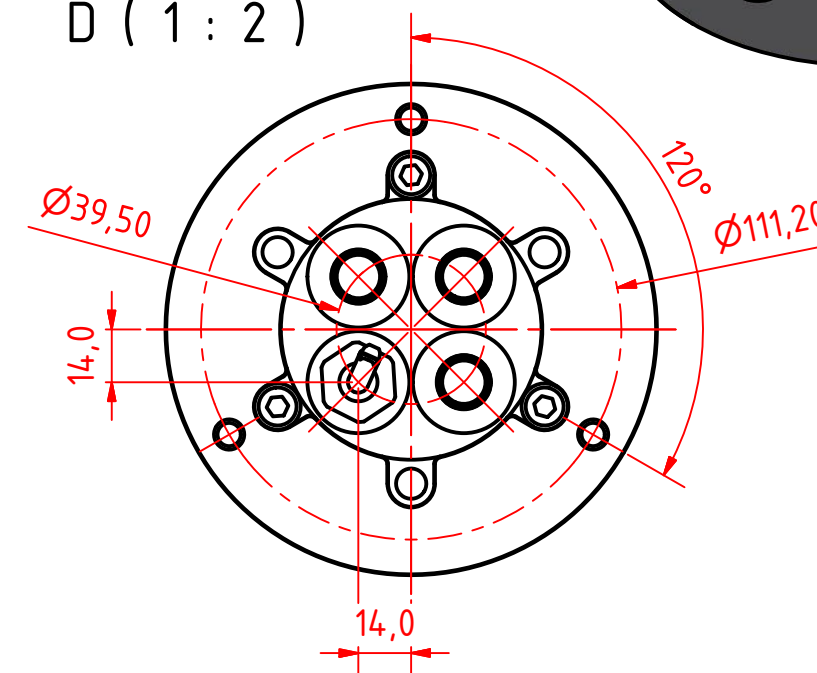
Lopolight ApS  
Ved Klaedebo 12  
DK-2970, Hoersholm  
Denmark

www.lopolight.com

Tel: (+45) 32 48 50 30 Fax: (+45) 32 48 50 32  
info@lopolight.com



D ( 1 : 2 )



200-014 - 360° Red, 400-035 Promount,  
400-401 Alu Base Plate, Cable Down.

DRAWING NO.:	REV. NO.:	SIZE:	DRAWN BY:
200-014GB	0	A3	Sergio
SCALE:	TOLERANCES:	REVIEWED BY:	CREATION DATE:
1:1	DS/ISO 2768-f		07-09-2017
MATERIAL DESCRIPTION:			
EN 6082 Alu, Acrylic. (20µ) Silver anodized according to EN ISO 7599 (50µ) Black anodized according to MIL-A 8625F			

This Drawing, and the information within, is the property of Lopolight ApS and may not be used in any form without express permission there from. Lopolight reserves the right to change this drawing and assumes no liability for the information communicated herein. Use of dimensions and other information in this drawing is at the users own risk.

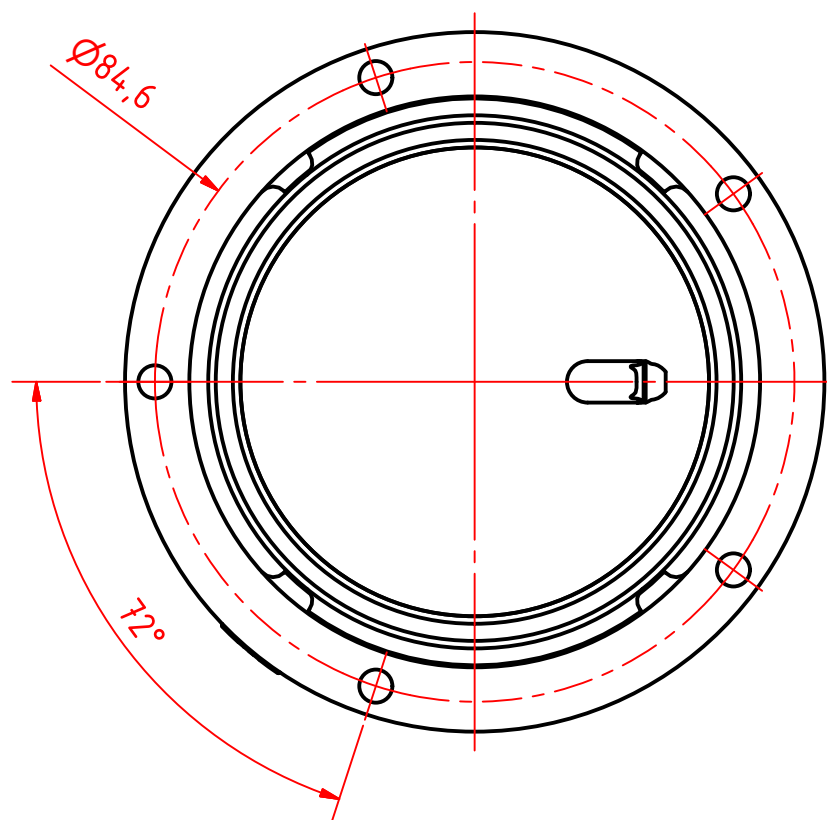
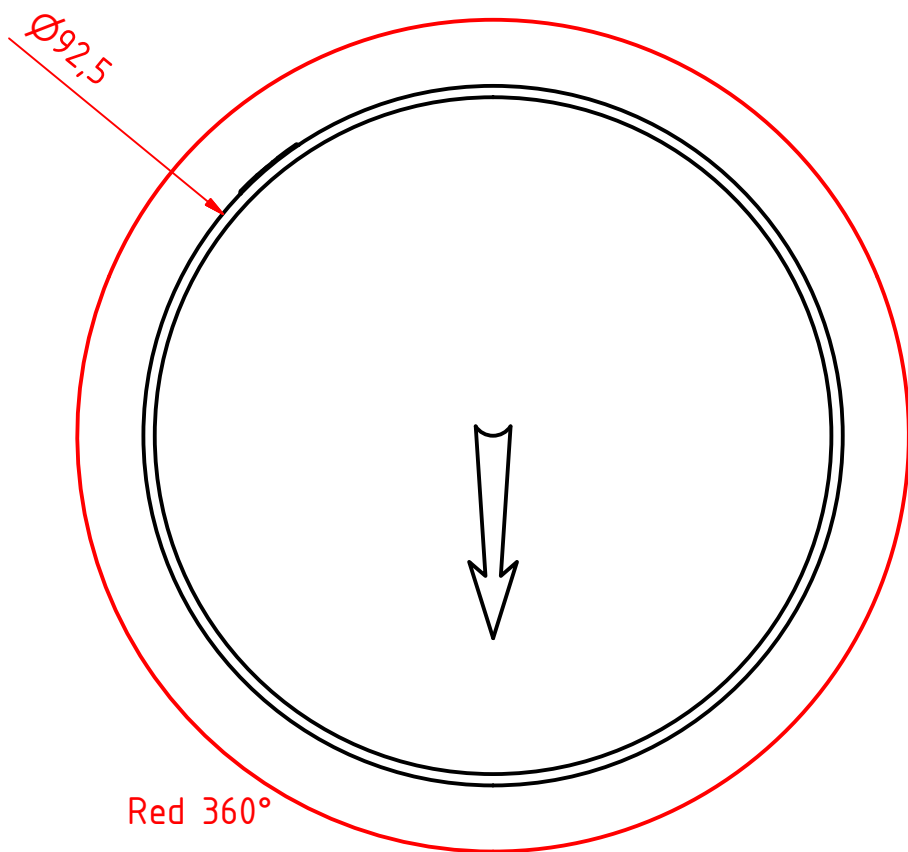
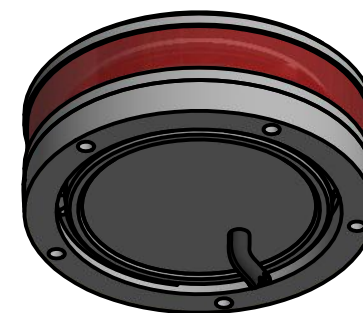
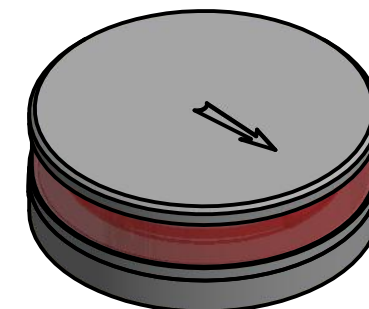
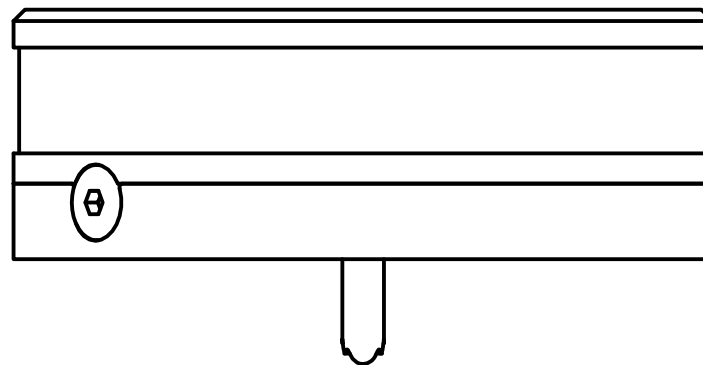
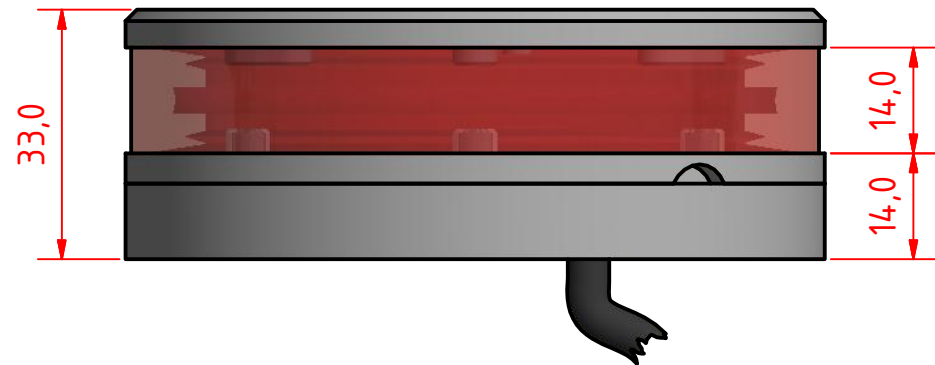
**LOPOLIGHT**

Lopolight ApS  
Ved Klaedebo 12  
DK-2970, Hoersholm  
Denmark

[www.lopolight.com](http://www.lopolight.com)

Tel: (+45) 32 48 50 30 Fax: (+45) 32 48 50 32  
[info@lopolight.com](mailto:info@lopolight.com)

50MM AT A3



### 200-014 - 360° Red on a low profile base

DRAWING NO.: <b>200-014HB</b>	REV. NO.: <b>0</b>	SIZE: <b>A3</b>	DRAWN BY: <b>Sergio</b>
SCALE: <b>1:1</b>	TOLERANCES: <b>DS/ISO 2768-f</b>	REVIEWED BY:	CREATION DATE: <b>07-09-2017</b>
MATERIAL DESCRIPTION: <b>Alu EN 6082, Acrylic, PE</b>			

This Drawing, and the information within, is the property of Lopolight ApS and may not be used in any form without express permission there from. Lopolight reserves the right to change this drawing and assumes no liability for the information communicated herein. Use of dimensions and other information in this drawing is at the users own risk.

**LOPOLIGHT**

Lopolight ApS  
Ved Klaedebo 12  
DK-2970, Hoersholm  
Denmark

[www.lopolight.com](http://www.lopolight.com)

Tel: (+45) 32 48 50 30 Fax: (+45) 32 48 50 32  
[info@lopolight.com](mailto:info@lopolight.com)

50MM AT A3