



Liferafts 2007



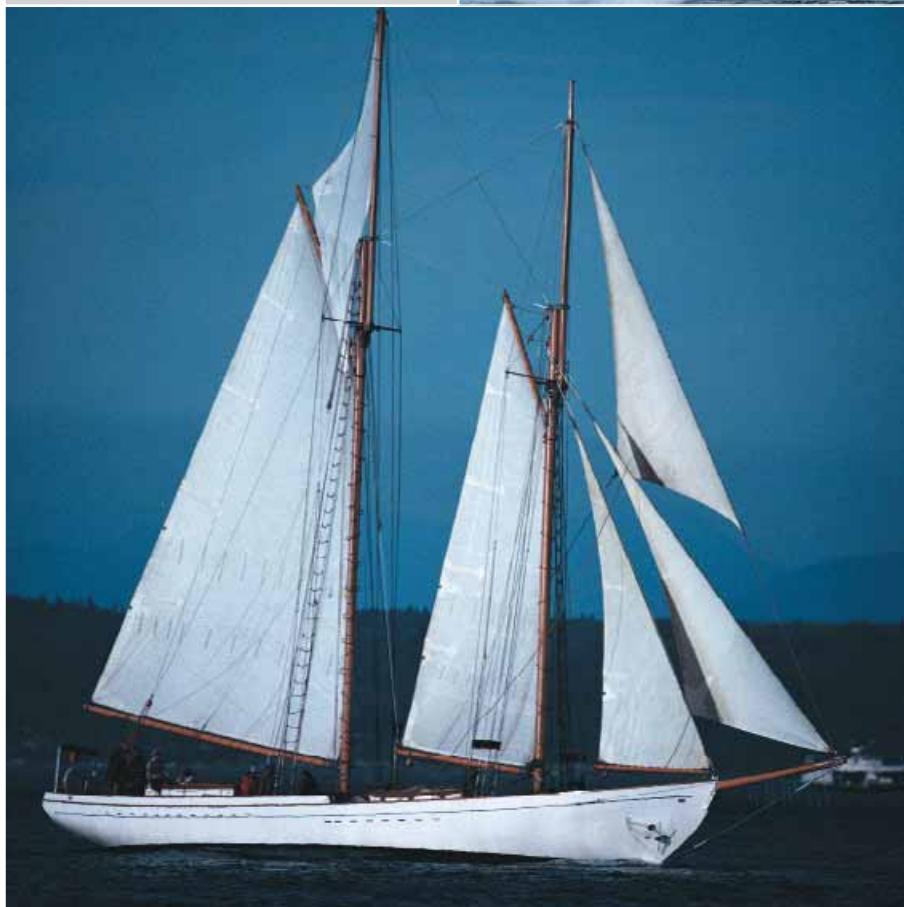
Made for Survival

Welcome to Avon Survival

Avon inflatables has a long and distinguished history in the design and manufacture of Life rafts, with more successful rescues to our credit than any other brand, including the longest life raft survival in history – an amazing 117 days.

Carefully designed to maximise safety and comfort, this long established range has a rich heritage and is continually updated to meet latest standards. Avon is proud to introduce the new Ocean and Coastline range, specifically designed to meet the most recent ISO 9650 international manufacturing standard. Ocean life rafts also comply with ISAF 2006-2007 OSR regulations.

When you invest in an Avon life raft, you invest in the finest quality and safety money can buy. The choice of an Avon Life raft is now even better than ever!



AVON[®]

Modula Range

The Modula series* is a well respected range of liferafts offering high quality design, materials and performance... the results of many years of experience in the fields of aeronautical safety equipment.

The Modula is available in either a unique modular designed fibreglass canister with optional extra attachable containers or in a specially developed valise.

The Modula range offers high quality liferafts packed to exceptionally small dimensions and extremely light in weight.

* not available in the USA, Canada and Australia.



Ocean and Coastline

The new range of Ocean and Coastline life rafts are made out of extremely light yet robust fabric directly inherited from the aeronautical sector. The compacting capacities of this fabric make these life rafts notable for their minimum dimensions for easy stowage.

The inflation system of Coastline and Ocean life rafts uses compressed air instead of CO2, avoiding low temperature inflation damage though icing up the buoyancy chamber. Non toxic for passengers, compressed air provides quick inflation at extremely low temperatures.



ISO 9650 International Manufacturing Standard

The new Ocean and Coastline life rafts are designed according to ISO 9650 standard. This international standard distinguishes 2 categories of rafts: "Type 1", meant for ocean navigation, and "Type 2" for coastal navigation.

Type 1 rafts are designed for sailing on the open sea, thus adapted to face high winds and heavy seas. They are available in 2 groups, Group A being designed to inflate correctly at an ambient air temperature of between -15 and 65°C, while Group B rafts are designed to inflate correctly between 0 and 65°C. Irrespective of their group, they offer two equipment levels that differ according to the time estimated by the yachtsman before rescue arrives: less than or more than 24 hours.

Guarantee and servicing

12-year Guarantee

Avon life rafts demonstrate outstanding quality and reliability and are supported by a worldwide network of authorized service stations. The Avon Modula, Ocean and Coastline ranges carry a 12-year Guarantee⁽¹⁾.

Servicing

Inspections are carried out at any of over 300 Approved Service Stations around the world. As a manufacturer, Avon recommends servicing within 3 years of date of manufacture⁽²⁾, then every 3 years.

Check your local regulations concerning servicing requirements.

Ask your Avon Dealer for full terms and conditions.

(1) the guarantee, which is valid only on return of the guarantee card, is accompanied by a financial contribution from the 7th year onwards. These conditions apply to Avon rafts purchased after 1st of September 2004.

(2) rafts for hire boats, as well as any boats sailing in tropical waters remain subject to an annual inspection.



Modula life raft

The Modula life raft is constructed with two independent buoyancy tubes and a self erecting canopy.

The yellow extremely lightweight buoyancy fabric -originally developed for aeronautic use- is resistant to variations in temperature and is tear proof.

The Modula has a specially developed inflation system to guarantee optimum pressure at all times.

All models feature an inflatable insulated floor providing excellent thermal protection and a fibreglass reinforced boarding ladder for easy access.



Standard features include

- Proven CO2 firing mechanism
- Buoyancy of 3.4 cu.ft and floor area of 4 sq. ft per person conform to IMO SOLAS (Safety Of Life at Sea) requirements
- Double floor standard
- Self erecting canopy for immediate protection
- Stabilising water pockets
- Observation / ventilation port and rain water collector
- Auto-switch activated cell light system
- Pressure relief/topping up valves
- All-around lifeline
- Interior grab line

The components shown in this picture are subject to change without notice
IOR EMERGENCY EQUIPMENT



The sea anchor reduces drifting and with anticapsizing water pockets, increases the liferaft's stability.



Anti-capsizing water pockets provide for instant stability after the liferaft has been inflated.

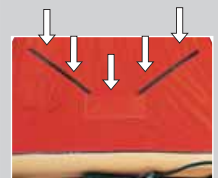
Specifications

	4 Persons	6 Persons	8 Persons
Modula canister (Pack Premium)			
Weight	54 lbs - 24,5 kg	59 lbs - 26,5 kg	-
Size	59 x 38 x 21 cm	59 x 38 x 21 cm	-
	23" x 15" x 8"	23" x 15" x 8"	-
Optional containers			
Weight empty (without pack)	8 lbs - 3,4 kg	8 lbs - 3,4 kg	-
Weight (with IOR emergency pack)	13 lbs - 5,9 kg	13 lbs - 5,9 kg	-
Size	13 x 38 x 21 cm	13 x 38 x 21 cm	-
	5" x 15" x 8"	5" x 15" x 8"	-
Modula Lite			
Weight	38 lbs - 17 kg	46 lbs - 21 kg	-
Size	60 x 20 x 28 cm	60 x 17 x 40 cm	-
	24" x 8" x 11"	24" x 6.7" x 16"	-
Modula Super			
Weight	44 lbs - 20 kg	52 lbs - 24 kg	63 lbs - 29 kg
Size	60 x 17 x 40 cm	60 x 19 x 40 cm	70 x 28 x 35 cm
	24" x 6.7" x 16"	24" x 7.5" x 16"	28" x 11" x 14"



The interior or exterior sea light is automatically activated and indispensable for the fast locating of the liferaft.

Rain water collection system
Rain water is collected and captured into an interior rain water pouch.



Made for Survival

Modula valise

Again with a minimum packed size, the Modula valise is both extremely light and easy. An added advantage of the special valise packing system (encapsulated within moulded rigid foam) is that any damage to the Life raft will cause the pack to deform for immediate alert. A choice of emergency pack is available as required, either standard (Modula Lite) or in accordance with the IOR category (Modula Super).

Modula canister

Modula canister brings state-of-the-art safety to the Avon range and is available for 4 or 6 persons. With its minimum packing size and its stylish light weight canister the Modula life raft is the perfect fit to suit any yacht. The cradle* allows installation on deck or on the deck railing. Even with the cradle locked, the life raft can be activated in case of emergency. Additional containers for personal equipment or an extra IOR emergency pack can be docked.

* the cradle is optional. Please consult your dealer.



	MODULA-Canister 4/6 Pers. (Pack Premium)	Optional IOR emergency pack in additional container	Modula Super (IOR emergency pack)	Modula Lite (standard emergency pack) 4/6 Pers.
Hand flares	3		3	
Signalling torch + spare batteries and bulb	1		1	
Sponges	2		2	2
Drinking water 100 ml (3.38 oz.)	18	12	20	
Textile paddles/bailers	2		2	2
Sea anchor	1		1	1
Safety knife	1		1	1
Rescue quoit on line	1		1	1
Hand pump	1		1	1
Anti-seasickness pills	60		60	
Repair kit (bladder)	1		1	1
Parachute flares		2	2	
Immediate action notice	1		1	1
Rain water collecting pouch	1	1	1	1
Whistle		1	1	
First aid pack		1	1	
Emergency rations (2 for 6 & 8 man Life Rafts)		2	1	
Light sticks		2		
Sun signalling mirror		1		
Plastic drinking cup		1		
Nylon line		1		

Where additional containers⁽¹⁾ are used, the cradle can be easily adjusted in size to accommodate the increased dimensions of two additional containers.

(1) Check availability of the additional container with your AVON dealer.



Optional additional containers⁽¹⁾ can be docked to the Modula and opened at any time. A security line links the containers with the life raft after deployment.



Ocean and Coastline Life saving design features

- Proven compressed air firing mechanism
- Inflation sequence starts within 10 seconds
- Inflatable floor standard (Ocean life raft) for comfort and insulation
- Self erecting canopies on all models, for immediate protection
- Ballast system operates within 30 seconds, and is fully effective after 60 seconds
- Double entrance on all sizes, with adjustable roll-up flaps for ventilation, observation and increased free board
- Rain water collector
- Auto-switch activated dry cell light system. Battery save feature
- Pressure relief/topping valves
- Choice of canister or valise, incorporating easy carry handles

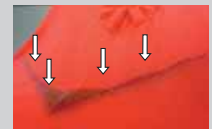


Valise

Manufactured from waterproof material with special lacing that breaks when the compressed air cylinder is fired.

Rain water collecting system

Rain water is collected and conducted into an interior rain water pouch.



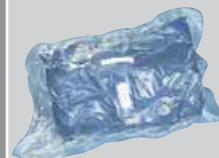
Canister

New canister designed for deck mounting (check hydrostatic release system compatibility with your Avon dealer). Straps break open when the compressed air cylinder is fired.



Vacuum sealed

All Avon Ocean and Coastline life rafts are now vacuum sealed in special plastic envelope, before being packed in a valise or canister.



Made for Survival

Ocean liferaft

The new range of Avon Ocean life rafts is designed to comply with ISO 9650 standard (Type 1 Group A), as well as ISAF most recent Offshore Special Regulations* for mono and multi hulls category 1 and 2.

The Avon standard Ocean-going life raft has many features, including very safe boarding, more internal headroom, and greater night time visibility. The buoyancy tubes and canopy are made of butyl, extremely light yet robust fabric directly inherited from the aeronautical sector.

Each of the two independent buoyancy tubes is capable of supporting the full complement the raft has been designed for. The standard inflatable floor helps to retain body heat in cold waters, and is fitted with a self-bailer system.



Under-24 hours Emergency Pack (included in canister or valise)

- Drinking water - 1 pint (0.5 litre) per person
- 2 signalling torches (flashlight)
- 2 spare batteries and bulb
- 2 paddles
- 2 parachute flares
- 3 hand flares
- 1 sun signalling mirror
- 1 bailer
- 2 sponges
- 1 bellow
- 1 repair kit
- 6 anti-seasickness pills per person
- 1 sea sickness bag per person
- 1 whistle
- Advice on immediate emergency procedures

Over 24 hours Emergency Pack, contained in optional grab bag

- 1 first aid pack, inc. 2 sun blocks

- 3 hand flares
- 2 thermal protective aids
- Drinking water – 2 pints (1.0 litre) per person
- Food rations

Features include

- 1 Square shaped inflatable boarding ramp + webbing bridle inside to ease entry into raft
 - 2 Bright red high visibility self-erecting canopy with retro reflective tapes, and rainwater collecting system
 - 3 Wraparound webbing system (patented) including bright colour lifelines, and high resistance towing point
 - 4 Automatically activated lighting: inside and on canopy arch, with battery-save feature
 - 5 Double entrance, with roll-up flaps including zip-up and velcro tie fastening
 - 6 Large weighted stabilizing water pockets (240 litres)
 - 7 Upper and lower independent butyl buoyancy tubes
 - 8 Self-bailer system
 - 9 Sea anchor - 100' (30 m) line
- Standard inflatable double floor for heat retention
 - Inflation compressed air cylinder on the side of the buoyancy tube + 39' painter/firing lanyard and securing patch for painter line
 - 1 rescue quito on 100' (30 m) line
 - Large diameter arch tube supporting canopy
 - Inside bracing lines
 - Pressure relief valves
 - Topping up valves
 - Floating knife in pouch to cut painter
 - Under-24 hours emergency pack exceeding ISO 9650 standard requirement (includes water and second torch)

Specifications

		4 Persons	6 Persons	8 Persons
Weight	valise	75 lbs - 34 kg	81 lbs - 37 kg	90 lbs - 41 kg
	canister	83 lbs - 37,5 kg	89 lbs - 40,5 kg	98 lbs - 44,5 kg
	grab bag	20 lbs - 9 kg	29 lbs - 13 kg	35 lbs - 16 kg
Length	valise	25" - 64 cm	29" - 74 cm	29" - 74 cm
	canister	28" - 72 cm	32" - 82 cm	32" - 82 cm
Width	valise	8" - 20 cm	9" - 22 cm	9" - 22 cm
	canister	22" - 55 cm	22" - 55 cm	22" - 55 cm
Height	valise	19" - 49 cm	19" - 49 cm	19" - 49 cm
	canister	8" - 21 cm	10" - 26 cm	10" - 26 cm



Over 24 hours
Emergency Pack,
contained in optional
grab bag



Under-24 hours
Emergency Pack
(included in
canister or valise)

* chap. 4.20.2 (d) I-IV).

Coastline liferaft

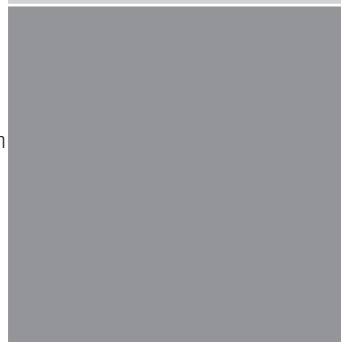
The new Avon Coastline life raft, designed according to ISO 9650 Type 2 standard, incorporates many of the same innovations and life-saving features including the unique Avon fabric and ballast system. The Avon Coastline twin independent tubes structure is designed to offer as much buoyancy and interior space as an offshore raft. The Coastline life raft high-quality inflation system uses compressed air to ensure optimal inflation in any weather conditions. Whilst Avon Coastline emergency pack provides all equipment needed for use close to the shore, its multi-sided shape is sign of maximum stability in rough seas and strong winds conditions.

Coastal emergency pack

- 1 signalling torch
- Spare batteries and bulb
- 1 whistle
- 1 signalling mirror
- 2 paddles
- 3 hand flares
- 2 parachute flares
- 1 bailer
- 2 sponges
- 1 bellow
- 1 repair kit
- 6 anti-seasickness pills per person
- 1 seasickness bag per person
- Advice on immediate emergency procedures

Features include

- ① High volume upper and lower independent butyl buoyancy tubes
- ② Bright red high visibility self-erecting canopy with retro reflective tapes, and rainwater collecting system
- ③ 2 boarding ladders + webbing bridle inside to ease entry into raft
- ④ Large weighted stabilizing water pockets (240 litres)
- ⑤ Wraparound webbing system (patented) including bright colour lifelines, and high resistance towing point
- ⑥ Inside bracing lines
- ⑦ Floating knife in pouch
- ⑧ Double entrance, with roll-up flaps including zip-up and velcro tie fastening
- Superior interior space and buoyancy volume (equivalent to an offshore raft)
- 1 rescue quoit on 100' (30 m) line
- Inflation compressed air cylinder on the side of the buoyancy tube + 39' painter/firing lanyard and securing patch for painter line
- 1 sea anchor - 100' (30 m) line
- Large diameter self inflating canopy arch for immediate protection from exposure to the elements
- Pressure relief valves
- Topping up valves
- Coastal emergency pack



Specifications

		6 Persons
Weight	valise	72 lbs - 32,5 kg
	canister	79 lbs - 36 kg
Length	valise	25" - 64 cm
	canister	28" - 72 cm
Width	valise	8" - 20 cm
	canister	22" - 55 cm
Height	valise	19" - 49 cm
	canister	8" - 21 cm



Made for Survival



UK - Avon Inflatables Limited.
 Dafen, Llanelli,
 Carmarthenshire SA14 8NA
 United Kingdom.
 Tel: +44 (0) 1554 882000
 Fax: +44 (0) 1554 882039

North America
 Avon Marine Inc.,
 540 Thompson Creek Road
 Stevensville, MD 21666
 USA
 Tel: +01 410.604.3616
 Fax: +01 410.643.4491



National Marine Manufacturers
 Association, USA.
 Association of Marine Traders UK.

Avon Inflatables is a supporter of



RNLI is a Registered charity
 N°209603

Your Local Dealer



info@avon-inflatable.com
 Web Site: avonmarine.com

The overall appearances of the watercraft depicted in this catalog are trademarks of Avon.

As a leading manufacturer, avon carries out a continuous programme of product improvements and safety awareness. Specifications are subject to change without notice, although all details shown are accurate at the time of going to press. Occasionally it may become necessary to produce avon products with a different trim than was originally specified. All dimensions/specifications are + or - 3%.

Product availability may vary by country. Please check with your dealer. Some models illustrated may feature non-standard equipment. See standard and optional equipment listings for full details.

We recommend that you read and understand your owner's manual. Safe boating is enjoyable with the rights of other water users respected.

Always wear the appropriate clothing and a personal flotation device or approved life jacket. It is recommended that you consider training to improve your skills on the water.

Photography: Avon, Gilles Martin-Raget, Creaset, Studio Collet, L. Soldano, Tom Benn - Lézard Graphique.